

Striagraph STRATTER 1000

Machine for measuring non-homogeneities in the glass

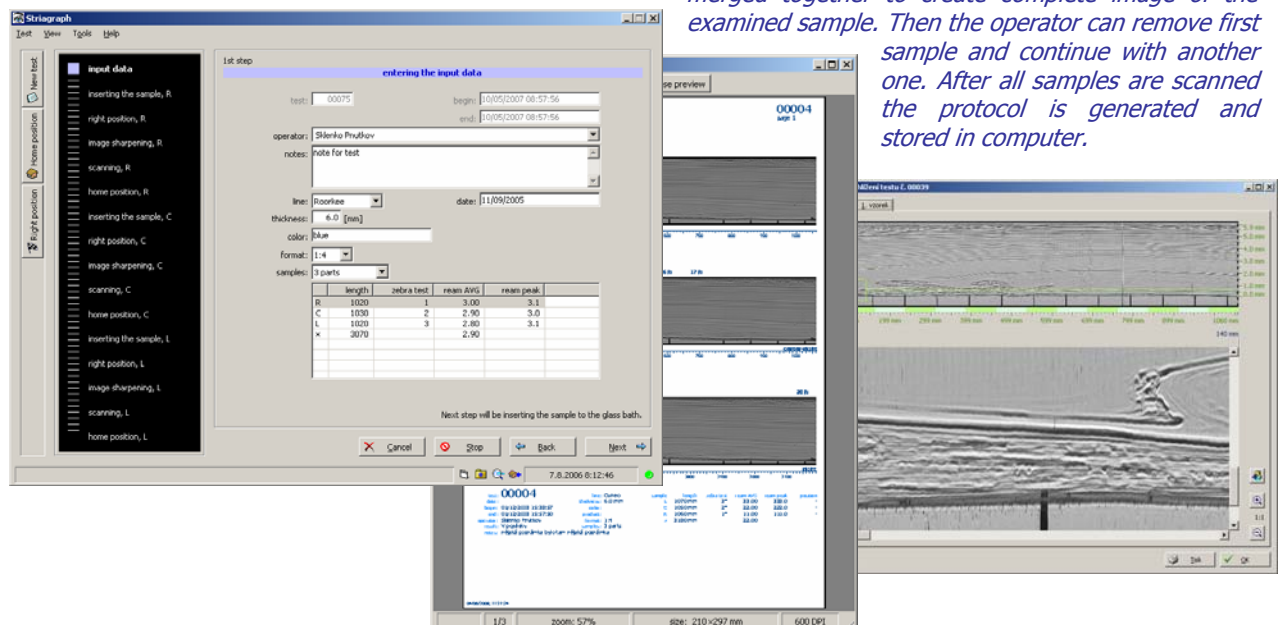


Striagraph model Stratter 1000™ is a modern machine that creates image of striae, bubbles and other non-homogeneities in thickness of sheet glass. Such an image is called a striagram and its practical use is quality measuring of examined sample of glass.

Whole machine consists of working table to which are attached device for measuring of the glass samples and electrical switchbox containing control circuits. Another part of the machine is personal computer which controls the machine via application software and stores test results. Samples of the glass are inserted into container made of flawless glass and filled with immersion liquid which has the same refractive index as the water has. This eliminates unwanted reflections on the edges of the sample. While operating machine there is no need to darken the room. The operator may work in normal conditions. Stratter 1000™ is designed to work with sheets of glass up to 1000 mm long with thickness of 2 to 12 mm and maximal width of 25 mm.

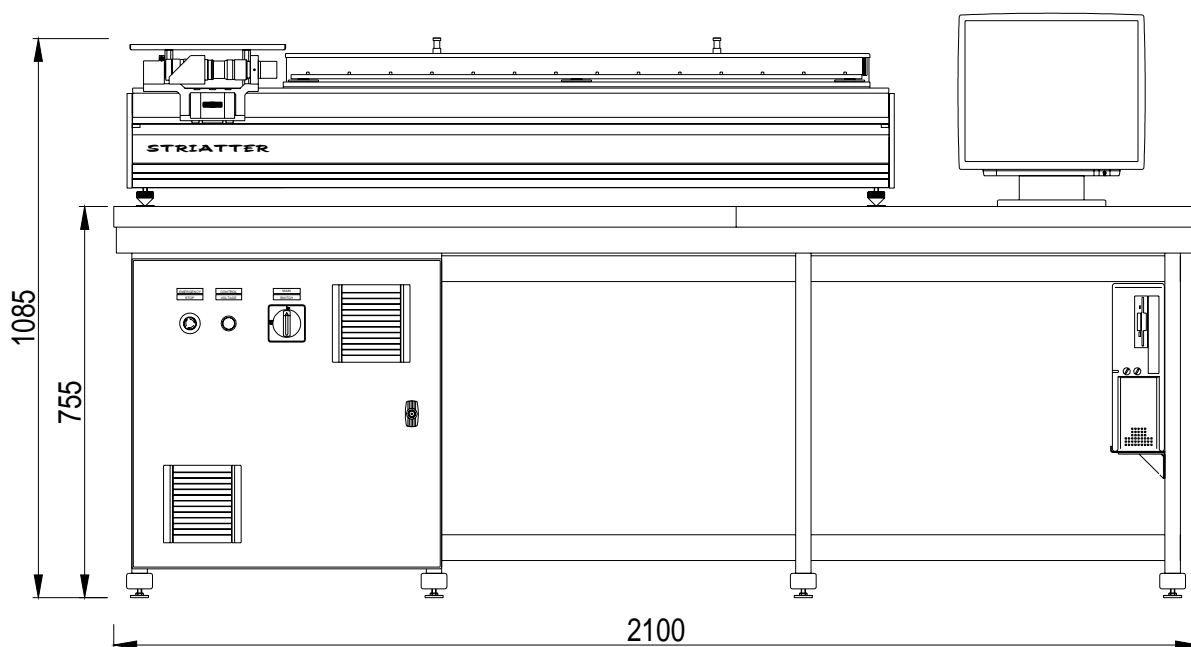
Machine is controlled through well arranged user interface of the application software. Striagram of the whole width of sheet is divided into up to eight parts. These are measured independently. Operator has to insert the first sample into container, enter identification data for test and measured sample (number of the test, date, time, thickness of glass, operator's name, etc.) into a computer. Then he has to run automatic evaluation of the inserted sample. Optical system will start moving along the inserted sample and taking shots of it. Images will be then merged together to create complete image of the examined sample. Then the operator can remove first

sample and continue with another one. After all samples are scanned the protocol is generated and stored in computer.



*Striagraph*_____ **STRIATTER 1000**

Machine for measuring non-homogeneities in the glass



*Basic technical parameters*_____

Type: Striatter 1000
Supply voltage: 230 V 50 Hz
Rated current: 10 A

Sample thickness: 2 to 12 mm
Sample width: 10 to 25 mm
Sample length: 300 to 1000 mm

*Contact*_____

NEWTE spol. s r. o.
Jateční 847
415 01 Teplice
Czech Republic

tel.: +420 417 536 531
fax: +420 417 577 865
e-mail: newte@newte.cz
[http: //www.newte.eu](http://www.newte.eu)