

VISTAscan



Eagle Eye System for your CD, CIM, TIM, TRIM machines

Visit our website: vista-scan.com

Eagle Eye System



Description

With the **Eagle Eye System**, we are offering a check detection system, which is optimized for the testing of flatware, tableware, medical glassware and container glass. The Eagle Eye System is a 16-channel quality assurance system that can be easily expanded to 32 channels.

Its ease of use and flexibility makes it to one of the best inspection systems on the market. Equipped with up to seven inspection types that can be performed in a single process, the Eagle Eye System offers also Mold Reader, Plug and Dip and Vision Reject. Each of the 16 or 32 independent channels can be configured with lights and sensors which are best suited for the detection of a specific defect.

There is a Master Console with Channel 1 to 16 and the Slave Console (17-32Ch) which is controlled by the Master. The Slave alone couldn't be used as a "Stand-alone System".

Also there are the new Infrared versions available.

Product Specifications

Operating Temperature:	-10 up to +60°C
Humidity:	95% non-condensing
Dimensions:(HxWxD)	88 x 444 x 366 mm
Channels:	16 or 27 channels
Measurement:	modulated LED photosensitive Sensor

NEW ENHANCED LIGHT



Description

The **New Enhanced Light** can be used very flexible because of its various images and focuses, which allow a very good (failure) detection for a wide range of defects. We provide the new Enhanced Light with a rectangular image of width 1 mm and lengths ranging from 2 to 10 mm.

Also there are the new Infrared versions available.

Product Specifications

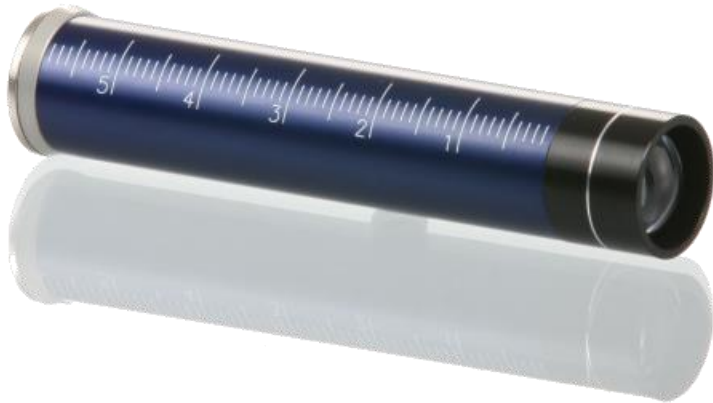
Operating Temperature:	-10 up to +60°C
Humidity:	>95%
Focus:	60mm
Image Length:	6mm
Image Width:	1mm
Dimensions: (Dia/Lenght)	14mm/85mm

NEW ENHANCED LIGHT

Item Description	Article	Focus / Color	Image Length	Image Width
VIS-LIGHT		60 / RED	6	1
VIS-LIGHT		60 / RED	15	1
VIS-LIGHT		60 / WHITE	6	1
VIS-LIGHT		60 / WHITE	15	1
VIS-LIGHT		60 / IRF	6	1
VIS-LIGHT		60 / IRF	15	1



NEW ENHANCED SENSOR



Description

The **New Enhanced Sensor** is used for receiving and handling the signal sent by the Lights. We offer it with the focus of 30 mm or 60 mm.

Also there are the new Infrared versions available.

Product Specifications

Operating Temperature:	-10 up to +60°C
Humidity:	>95%
Focus:	60mm
Dimensions:(Diameter/Length)	14mm/85mm

NEW ENHANCED SENSOR

Item Description	Article	Focus	STD	IRF
VIS-SENSOR		30	x	-
VIS-SENSOR		60	x	-
VIS-SENSOR		60	-	x



FINISH CHECK KIT



Description

The **Finish Check Kit** is due to its longer image length very suitable to check the Finish of a glass container. There are always delivered two Lights and two Sensors together.

Also there are the new Infrared versions available.

Product Specifications

Operating Temperature:	-10 up to +60°C
Humidity:	>95%
Focus:	60mm
Image Length:	25mm
Image Width:	1mm
Dimensions: (Dia/Length)	
Light:	
Sensor:	14mm/85mm 14mm/85mm

Included in Delivery

Finish Check Light	2x
Finish Check Sensor	2x
Cable Light 1,5m	2x
Cable Sensor 1,5m	2x

FINISH CHECK KIT

Item Description	Article	Focus / Color	Image Length	Image Width
VIS-FINISH-CHECK-KIT		60 / RED	15	1
VIS-FINISH-CHECK-KIT		60 / WHITE	15	1
VIS-FINSIH-CHECK-KIT		60 / IRF	15	1



SHOULDER CHECK KIT



Description

The **Shoulder Check Kit** with a rectangular image of 25mm x 1mm is very suitable to check the shoulder of a glass container. The Kit always includes the Shoulder Light, the Shoulder Sensor and the necessary cables.

Also there are the new Infrared versions available.

Product Specifications

Operating Temperature:	-10 up to +60°C
Humidity:	>95%
Focus:	60mm
Image Length:	25mm
Image Width:	1mm
Dimensions:(Dia/Length)	
Light:	
Sensor:	29mm/85mm 29mm/75mm

Included in Delivery

Shoulder Check Light	1x
Shoulder Check Sensor	1x
Cable Light 1,5m	1x
Cable Sensor 1,5m	1x

SHOULDER CHECK KIT

Item Description	Article	Focus / Color	Image Length	Image Width
VIS-SHOULDER-CHECK-KIT		60 / RED	25	1
VIS-SHOULDER-CHECK-KIT		60 / WHITE	25	1
VIS-SHOULDER-CHECK-KIT		60 / IRF	25	1



BODY CHECK KIT



Description

The **Body Check Kit** with a rectangular image of 35mm x 1mm is very suitable to check the Body of a glass container. The Kit always includes the Body Light, the Body Sensor and the necessary cables.

Also there are the new Infrared versions available.

Product Specifications

Operating Temperature:	-10 up to +60°C
Humidity:	>95%
Focus:	60mm
Image length:	35mm
Image width:	1mm
Measures: (Dia/Length)	
Light:	
Sensor:	29mm/85mm 29mm/75mm

Included in Delivery

Body Check Light	1x
Body Check Sensor	1x
Cable Light 1,5m	1x
Cable Sensor 1,5m	1x

BODY CHECK KIT

Item Description	Article	Focus / Color	Image Length	Image Width
VIS-BODY-CHECK-KIT		60 / RED	35	1
VIS-BODY-CHECK-KIT		60 / WHITE	35	1
VIS-BODY-CHECK-KIT		60 / IRF	35	1



HEEL CHECK KIT



Description

The **Heel Check Kit** has a rectangular image of medium length and a smaller focus of only 30mm. The shorter focus allows a positioning at smaller distance and is specially developed to check the transition between the body and the base of a glass container.

The Kit always includes the Heel Light, the Heel Sensor and the necessary cables.

Also there are the new Infrared versions available.

Product Specifications

Operating Temperature:	-10 up to +60°C
Humidity:	>95%
Focus:	30mm
Image length:	15mm
Image width:	1mm
Measures:(Dia/Length)	
Light:	14mm/72mm
Sensor:	14mm/72mm

Included in Delivery

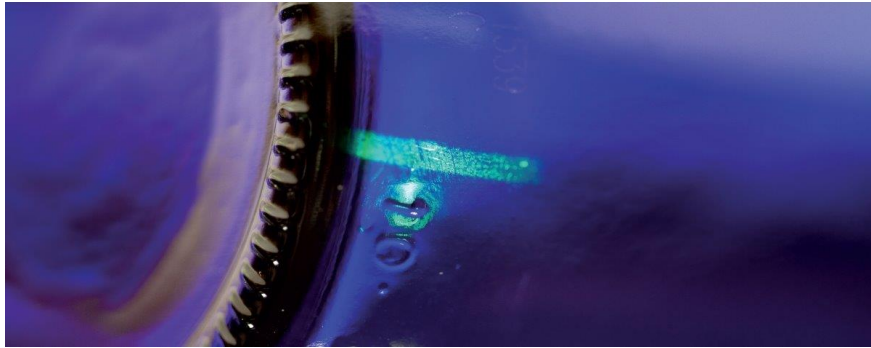
Heel Check Light	1x
Heel Check Sensor	1x
Cable Light 2m	1x
Cable Sensor 2m	1x

HEEL CHECK KIT

Item Description	Article	Focus / Color	Image Length	Image Width
VIS-HEEL-CHECK-KIT		30 / RED	15	1
VIS-HEEL-CHECK-KIT		30 / WHITE	15	1
VIS-HEEL-CHECK-KIT		30 / IRF	15	1



MOLD NUMBER READER



Description

The **Mold Number Reader** processes the reflections from the mold number dots and assigns the corresponding number. The use of modulated light sources and corresponding filters on the signal processing side makes it insensitive to extraneous light. The Mold Number Reader can read all specified heel dot codes, new codes can be easily integrated. The newly developed pattern recognition algorithm works independently of machine speed and bottle diameter.

Also there are the new Infrared versions available.

Included in Delivery

MNR Check Light	1x
MNR Check Sensor	1x
Cable Light 4m	1x
Cable Sensor 4m	1x
Adjustable Holder for Light and Sensor	1x

Product Specifications

Operating Temperature:	-10 up to +60°C
Humidity:	>95%
Focus:	30mm
Image length:	15mm
Image width:	1mm
Measures:(Dia/Length)	
Light:	14mm/72mm
Sensor:	14mm/72mm

MOLD NUMBER READER KIT

Item Description	Article	Focus / Color	Image Length	Image Width
VIS-MNR-KIT		30 / RED	15	1
VIS-MNR-KIT		30 / WHITE	15	1
VIS-MNR-KIT		30 / IRF	15	1



ALIGNMENT TOOL



Description

The **Alignment Tool** is a special sensor who makes the adjustment of the check detection much easier. With a focus of 60 it could be used for all possible constellations. We measured a reduction of the changeover time by 40%, which makes the Alignment Tool very worthwhile. Also included is a special tupe for exact alignment of the Sensor.

Product Specifications

Operating Temperature:	-10 up to +60°C
Humidity:	>95%
Focus:	60mm
Image Length:	Covers the reception area
Image Width:	
Dimensions:(Dia/Length)	14mm/85mm

Included in Delivery

Alignment Tool red image	1x
Alignment Tool green image	1x
Secial Tube for alignment	1x

ALIGNMENT TOOL

Item Description	Article	Focus in mm	Image Length	Image Width
VIS-ALIGNMENT-TOOL		60	Crosshair	Crosshair

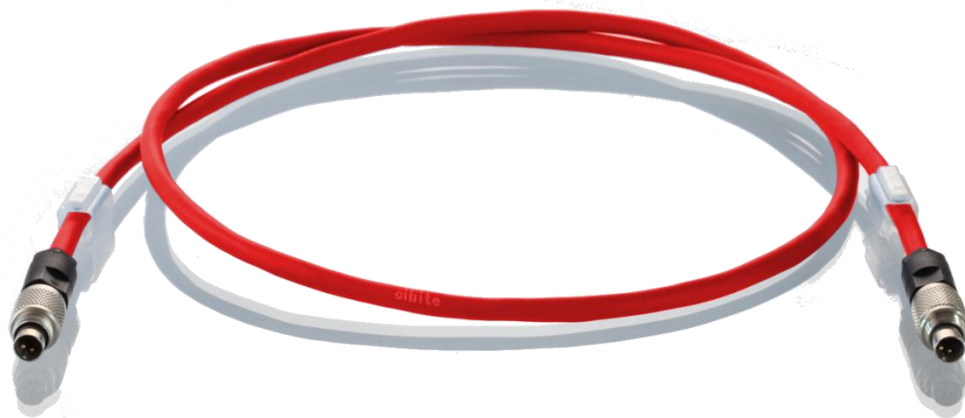


CABLE LIGHT



Description

Cable for connecting the Lights to the Eagle Eye Light Unit. The Cables can be supplied in various lengths between 1,5m and 3,5m.

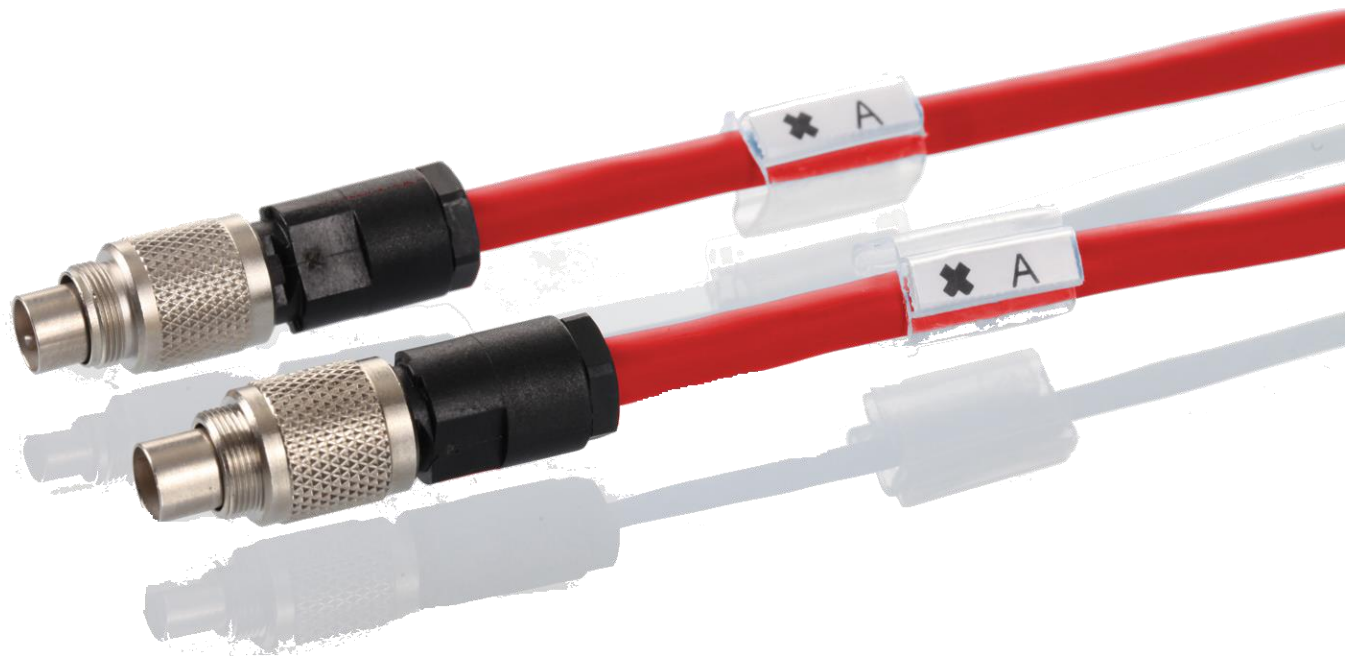


Product Specifications

Cable designation:	LIYCY 0,22mm ²
Operating Temperatur:	-30 up to +70°C
Number of conductors:	2
Connector/Jack:	2pol Jack Snap In-Plug
Shielding:	yes
Cable color:	red
Length:	1-3m

CABLE LIGHT

Item Description	Article	Cable Length
VIS-CABLE-LIGHT		1,5m
VIS-CABLE-LIGHT		2,0m
VIS-CABLE-LIGHT		2,5m
VIS-CABLE-LIGHT		3,0m
VIS-CABLE-LIGHT		3,5m



CABLE SENSOR



Description

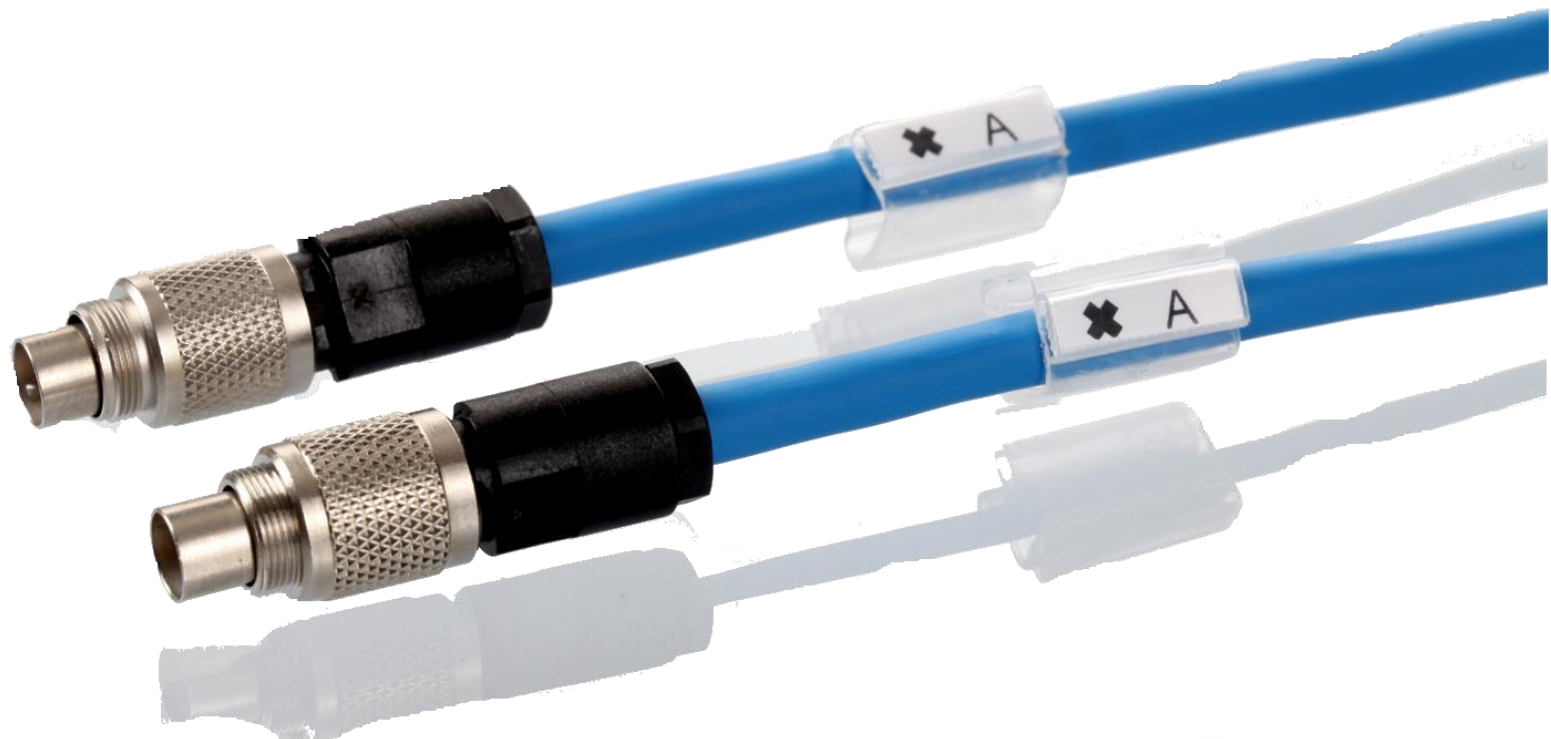
Cable for connecting the Sensors to the Manifold Board of the System. The Cables can be supplied in various lengths between 1m and 3m.

Product Specifications

Cable designation:	LIYCY 0,14mm ²
Operating Temperatur:	-30 up to +70°C
Number of conductors:	5
Connector/Jack:	5pol Jack Snap In-Plug
Shielding:	yes
Cable color:	Blue
Length:	1-3m

CABLE SENSOR

Item Description	Article	Cable Length
VIS-CABLE-LIGHT		1,5m
VIS-CABLE-LIGHT		2,0m
VIS-CABLE-LIGHT		2,5m
VIS-CABLE-LIGHT		3,0m
VIS-CABLE-LIGHT		3,5m



CLAMP HOLDER



Description

Different **Clamp Holder** for Light and sensor. Also for all Defect Kits.

Product Specifications

Material:	Aluminium
Operating Temperatur:	-20 up to + 105°C

CLAMP HOLDER

Item Description	Article	Diameter
VIS-CLAMP-HOLDER		14mm
VIS-CLAMP-HOLDER		29mm



Adjustment Holder

Description

Different **Adjustment Holder** for Light and sensor.
Also for all Defect Kits.

Product Specifications

Material:	Aluminium
Operating Temperatur:	-20 up to + 105°C
Color:	Red and blue

ADJUSTMENT HOLDER

Item Description	Article	Color	Diameter
VIS-CLAMP-HOLDER		Red	14mm
VIS-CLAMP-HOLDER		Blue	14mm
VIS-CLAMP-HOLDER		Red	29mm
VIS-CLAMP-HOLDER		Blue	29mm

Contact us

VISTAscan GmbH

VISTAscan GmbH
Posthof 4
86609 Donauwörth

Fon: +49 906 9999 8239

Email: sales@vista-scan.com

Email / Internet

Sales: sales@vista-scan.com

Place an order: order@vista-scan.com

Website: www.vista-scan.com



marketing@vista-scan.com