

VISTAscan



LIS System for Rotary Machines T

Visit our website: vista-scan.com

LIS CONSOLE T



Description

With the **LIS Console T**, we are offering a check detection system, which is optimized for the testing of flatware, tableware, medical glassware and container glass. The LIS Console T is a 16-channel quality assurance system that can be easily expanded to 32 channels.

Its ease of use and flexibility makes it to one of the best inspection systems on the market. Equipped with up to seven inspection types that can be performed in a single process, the LIS Console T offers also step-motor-control and the Vision plug-and-dip-test. Each of the 16 or 32 independent channels can be configured with lights and sensors which are best suited for the detection of a specific defect.

There is a Master Console with Channel 1 to 16 and the Slave Console (17-32Ch) which is controlled by the Master. The Slave alone couldn't be used as a "Stand-alone System".

Also there are the new Infrared versions available.

Product Specifications

Operating Temperature:	-10 up to +60°C
Humidity:	95% non-condensing
Dimensions:(HxWxD)	88 x 444 x 366 mm
Channels:	16 or 27 channels
Measurement:	modulated LED photosensitive Sensor

NEW ENHANCED LIGHT



Description

The **New Enhanced Light** can be used very flexible because of its various images and focuses, which allow a very good (failure) detection for a wide range of defects. We provide the new Enhanced Light with a rectangular image of width 1 mm and lengths ranging from 2 to 10 mm.

Also there are the new Infrared versions available.

Product Specifications

Operating Temperature:	-10 up to +60°C
Humidity:	>95%
Focus:	60mm
Image Length:	6mm
Image Width:	1mm
Dimensions: (Dia/Lenght)	14mm/85mm

NEW ENHANCED LIGHT

Item Description	ART / ID	Focus / Color	Image Length	Image Width
VIS-LIGHT	ART002911/13655P3	60 / RED	6	1
VIS-LIGHT	ART006451/13655P24	60 / RED	15	1
VIS-LIGHT	ART008331/13655P62	60 / WHITE	6	1
VIS-LIGHT	ART008334/13655P65	60 / WHITE	15	1
VIS-LIGHT	ART009674	60 / IRF	6	1
VIS-LIGHT	ART009675	60 / IRF	15	1

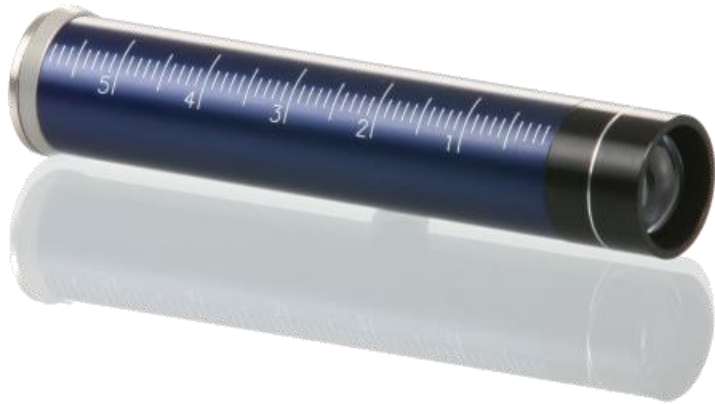


NEW ENHANCED SENSOR

Description

The **New Enhanced Sensor** is used for receiving and handling the signal sent by the Lights. We offer it with the focus of 30 mm or 60 mm.

Also there are the new Infrared versions available.



Product Specifications

Operating Temperature:	-10 up to +60°C
Humidity:	>95%
Focus:	60mm
Dimensions:(Diameter/Length)	14mm/85mm

NEW ENHANCED SENSOR

Item Description	ART / ID	Focus	STD	IRF
VIS-SENSOR	ART007149	30	x	-
VIS-SENSOR	ART002912/13655P4	60	x	-
VIS-SENSOR	ART008370/13655P79	60	-	x



FINISH CHECK KIT



Description

The **Finish Check Kit** is due to its longer image length very suitable to check the Finish of a glass container. There are always delivered two Lights and two Sensors together.

Also there are the new Infrared versions available.

Product Specifications

Operating Temperature:	-10 up to +60°C
Humidity:	>95%
Focus:	60mm
Image Length:	25mm
Image Width:	1mm
Dimensions: (Dia/Length)	
Light:	
Sensor:	14mm/85mm 14mm/85mm

Included in Delivery

Finish Check Light	2x
Finish Check Sensor	2x
Cable Light 1,5m	2x
Cable Sensor 1,5m	2x

FINISH CHECK KIT

Item Description	ART/ID	Focus / Color	Image Length	Image Width
VIS-FINISH-CHECK-KIT	ART003199/13655P13	60 / RED	15	1
VIS-FINISH-CHECK-KIT	ART008362/13655P71	60 / WHITE	15	1
VIS-FINSIH-CHECK-KIT	ART009680	60 / IRF	15	1



SHOULDER CHECK KIT



Description

The **Shoulder Check Kit** with a rectangular image of 25mm x 1mm is very suitable to check the shoulder of a glass container. The Kit always includes the Shoulder Light, the Shoulder Sensor and the necessary cables.

Also there are the new Infrared versions available.

Product Specifications

Operating Temperature:	-10 up to +60°C
Humidity:	>95%
Focus:	60mm
Image Length:	25mm
Image Width:	1mm
Dimensions:(Dia/Length)	
Light:	
Sensor:	29mm/85mm 29mm/75mm

Included in Delivery

Shoulder Check Light	1x
Shoulder Check Sensor	1x
Cable Light 1,5m	1x
Cable Sensor 1,5m	1x

SHOULDER CHECK KIT

Item Description	ART/ID	Focus / Color	Image Length	Image Width
VIS-SHOULDER-CHECK-KIT	ART002168/13655P11	60 / RED	25	1
VIS-SHOULDER-CHECK-KIT	ART008368/13655P77	60 / WHITE	25	1
VIS-SHOULDER-CHECK-KIT	ART008370	60 / IRF	25	1



BODY CHECK KIT



Description

The **Body Check Kit** with a rectangular image of 35mm x 1mm is very suitable to check the Body of a glass container. The Kit always includes the Body Light, the Body Sensor and the necessary cables.

Also there are the new Infrared versions available.

Product Specifications

Operating Temperature:	-10 up to +60°C
Humidity:	>95%
Focus:	60mm
Image length:	35mm
Image width:	1mm
Measures: (Dia/Length)	
Light:	
Sensor:	29mm/85mm 29mm/75mm

Included in Delivery

Body Check Light	1x
Body Check Sensor	1x
Cable Light 1,5m	1x
Cable Sensor 1,5m	1x

BODY CHECK KIT

Item Description	ART/ID	Focus / Color	Image Length	Image Width
VIS-BODY-CHECK-KIT	ART002914/13655P10	60 / RED	35	1
VIS-BODY-CHECK-KIT	ART008359/13655P68	60 / WHITE	35	1
VIS-BODY-CHECK-KIT	ART009678	60 / IRF	35	1



HEEL CHECK KIT



Description

The **Heel Check Kit** has a rectangular image of medium length and a smaller focus of only 30mm. The shorter focus allows a positioning at smaller distance and is specially developed to check the transition between the body and the base of a glass container.

The Kit always includes the Heel Light, the Heel Sensor and the necessary cables.

Also there are the new Infrared versions available.

Product Specifications

Operating Temperature:	-10 up to +60°C
Humidity:	>95%
Focus:	30mm
Image length:	15mm
Image width:	1mm
Measures:(Dia/Length)	
Light:	14mm/72mm
Sensor:	14mm/72mm

Included in Delivery

Heel Check Light	1x
Heel Check Sensor	1x
Cable Light 2m	1x
Cable Sensor 2m	1x

HEEL CHECK KIT

Item Description	ART/ID	Focus / Color	Image Length	Image Width
VIS-HEEL-CHECK-KIT	ART002251/13655P9	30 / RED	15	1
VIS-HEEL-CHECK-KIT	ART008365/13655P74	30 / WHITE	15	1
VIS-HEEL-CHECK-KIT	ART009681	30 / IRF	15	1



ALIGNMENT TOOL



Description

The **Alignment Tool** is a special sensor who makes the adjustment of the check detection much easier. With a focus of 60 it could be used for all possible constellations. We measured a reduction of the changeover time by 40%, which makes the Alignment Tool very worthwhile. Also included is a special tupe for exact alignment of the Sensor.

Product Specifications

Operating Temperature:	-10 up to +60°C
Humidity:	>95%
Focus:	60mm
Image Length:	Covers the reception area
Image Width:	
Dimensions:(Dia/Length)	14mm/85mm

Included in Delivery

Alignment Tool red image	1x
Alignment Tool green image	1x
Secial Tube for alignment	1x

ALIGNMENT TOOL

Item Description	ART/ID	Focus in mm	Image Length	Image Width
VIS-ALIGNMENT-TOOL	ART002914/13655P33	60	Crosshair	Crosshair

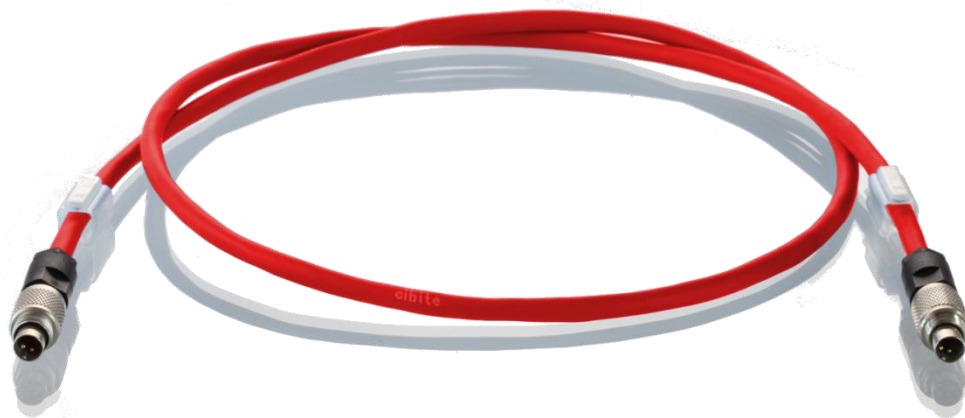


CABLE LIGHT



Description

Cable for connecting the Lights to the Manifold Board of the System. The Cables can be supplied in various lengths between 1m and 3m.

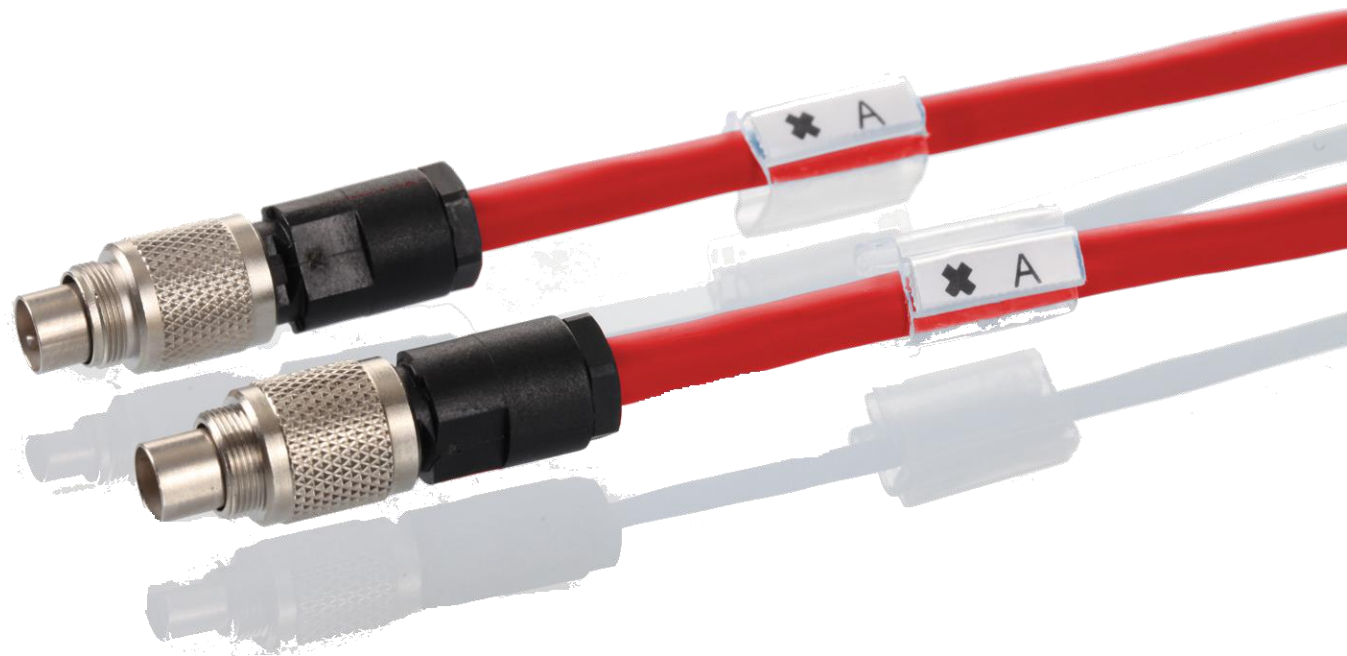


Product Specifications

Cable designation:	LIYCY 0,22mm ²
Operating Temperatur:	-30 up to +70°C
Number of conductors:	2
Connector/Jack:	2pol Jack Snap In-Plug
Shielding:	yes
Cable color:	red
Length:	1-3m

CABLE LIGHT

Item Description	ART / ID	Cable Length
VIS-CABLE-LIGHT	ART002908/13655P5	1m
VIS-CABLE-LIGHT	ART002926/13655P22	1,5m
VIS-CABLE-LIGHT	ART002909/13655P7	2,0m
VIS-CABLE-LIGHT	ART002934/13166P34	2,5m
VIS-CABLE-LIGHT	ART0022935/13116P35	3m



CABLE SENSOR



Description

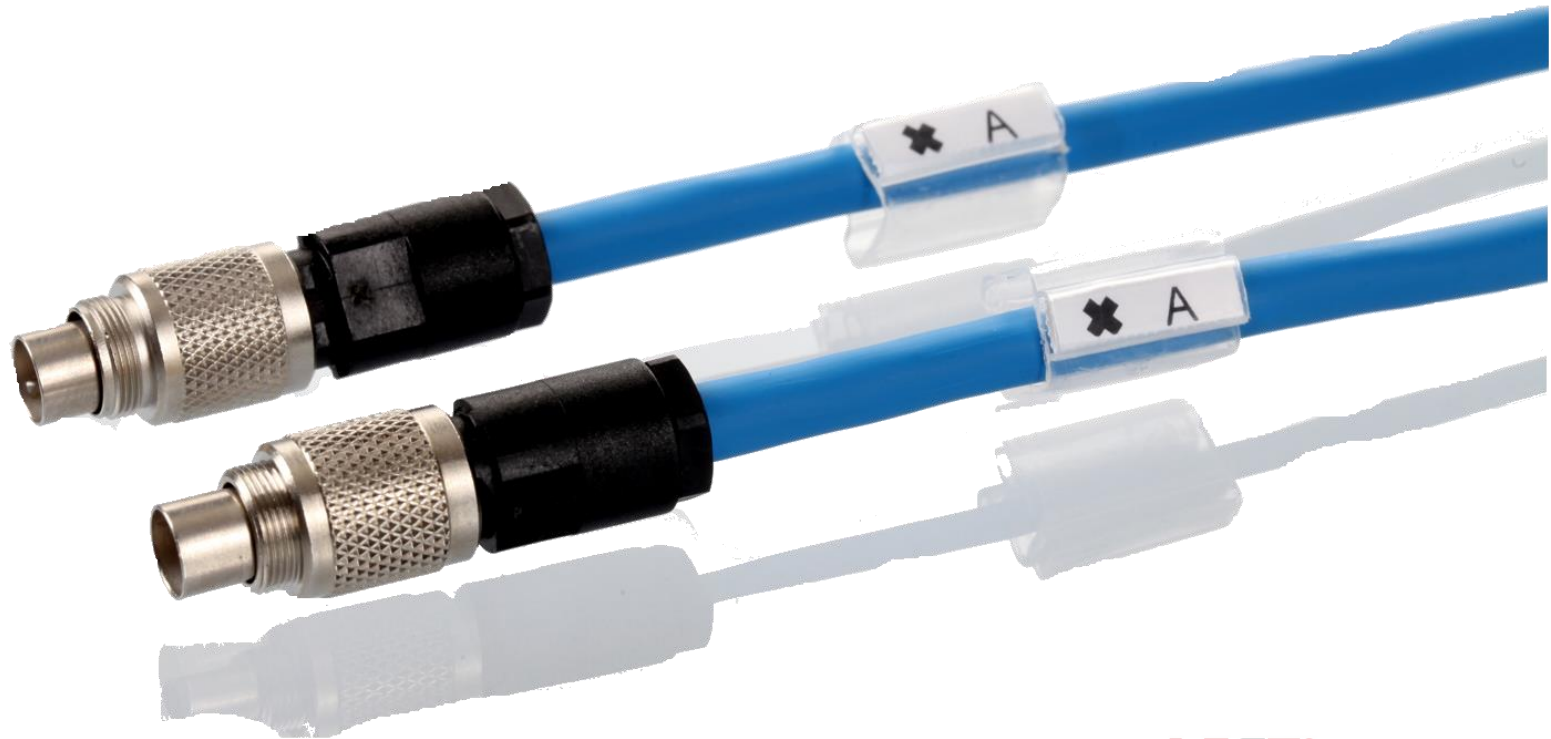
Cable for connecting the Sensors to the Manifold Board of the System. The Cables can be supplied in various lengths between 1m and 3m.

Product Specifications

Cable designation:	LIYCY 0,14mm ²
Operating Temperatur:	-30 up to +70°C
Number of conductors:	5
Connector/Jack:	5pol Jack Snap In-Plug
Shielding:	yes
Cable color:	Blue
Length:	1-3m

CABLE SENSOR

Item description	ART / ID	Cable length
VIS-CABLE-SENSOR	ART002906/13655P6	1m
VIS-CABLE-SENSOR	ART002925/13655P23	1,5m
VIS-CABLE-SENSOR	ART002907/13655P8	2m
VIS-CABLE-SENSOR	ART002932/13655P36	2,5m



CABLE MANIFOLD BOARD



Description

Cable for connecting the Manifold Board to the LIS Console T.

Product Specifications

Cable designation:	LIYCY
Operating Temperature:	-30 up to +70°C
Number of conductors:	25 pin DSUB Plug
Connector/Jack:	yes
Shielding:	yes
Cable color:	Grey

Item Description	ART / ID	Length
VIS-CABLE-MFB	ART005663/13655P15	8,0m
VIS-CABLE-MFB	ART002901/13655P39	4,6m
VIS-CABLE-MFB	ART005664/13655P14	3,0m
VIS-CABLE-MFB	ART002922/13655P40	6,1m

CABLE POWER



Description

Cable for connecting the Power Supply to the LIS Console T.

Product Specifications

Cable designation:	M-Flex-JZ 1,5mm ²
Operating Temperatur:	-30 up to +70°C
Number of conductors:	8
Connector/Jack:	8pol Connector
	8pol Connector
	no
Shielding:	Grey
Cable color:	

Item Description

ART / ID

Length

VIS-CABLE-POWER

ART005727/13655P49

1,2m

VIS-CABLE-POWER

ART005727/13655P49

9,1m

CABLE POWER CROSS



Description

Cable for bridging the supply voltage from the LIS Console Master to the LIS Console Slave.

Product Specifications

Cable designation:	H05VV-F4G
Operating Temperature:	-30 up to +90°C
Number of conductors:	4
Connector/Jack:	4pol Connector
Shielding:	no
Cable color:	Grey

Item Description

ART / ID

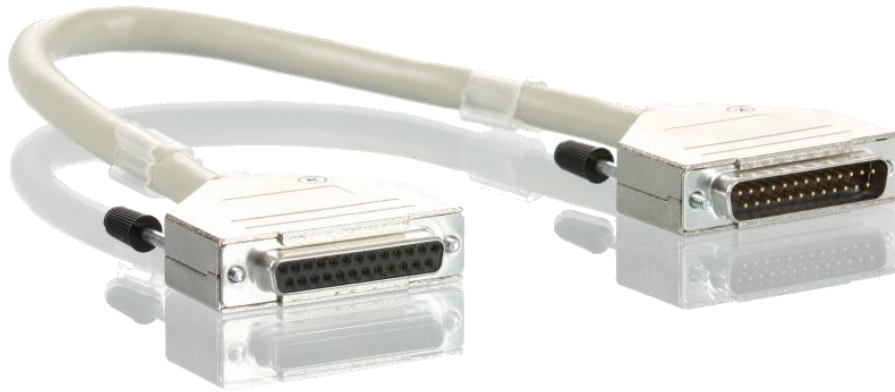
Length

VIS-CABLE-POWER

ART002923/13655P41

0,4m

CABLE SYNC



Description

Cable for synchronizing the LIS Master Console and the LIS Slave Console.

Product Specifications

Cable designation:	LIYCY
Operating Temperature:	-30 up to +70°C
Number of conductors:	25
Connector/Jack:	DSUB 25pol
Shielding:	no
Cable color:	Grey

Item Description

ART / ID

Length

VIS-CABLE-SYNC

ART002900/13655P42

0,4m

MANIFOLD BOARD LEFT



Description

Cable connection box for the LIS Console T. The box offers ports for 16 Light and 16 Sensor Channels (Channel 1 to 16)

Product Specifications

Operating Temperatur:	-10 up to +60°C
Humidity:	95% non condensing
Channels:	1-16
Ports:	25pol DSUB Light

Item Description

ART / ID

VIS-MANIFOLD-BRD-LEFT

ART002822/13655P27

MANIFOLD BOARD RIGHT



Description

Cable connection box for the LIS Console T. The box offers ports for 16 Light and 16 Sensor Channels (Channel 17 to 32)

Product Specifications

Operating Temperatur:	-10 up to +60°C
Humidity:	95% non condensing
Channels:	17-32
Ports:	25pol DSUB

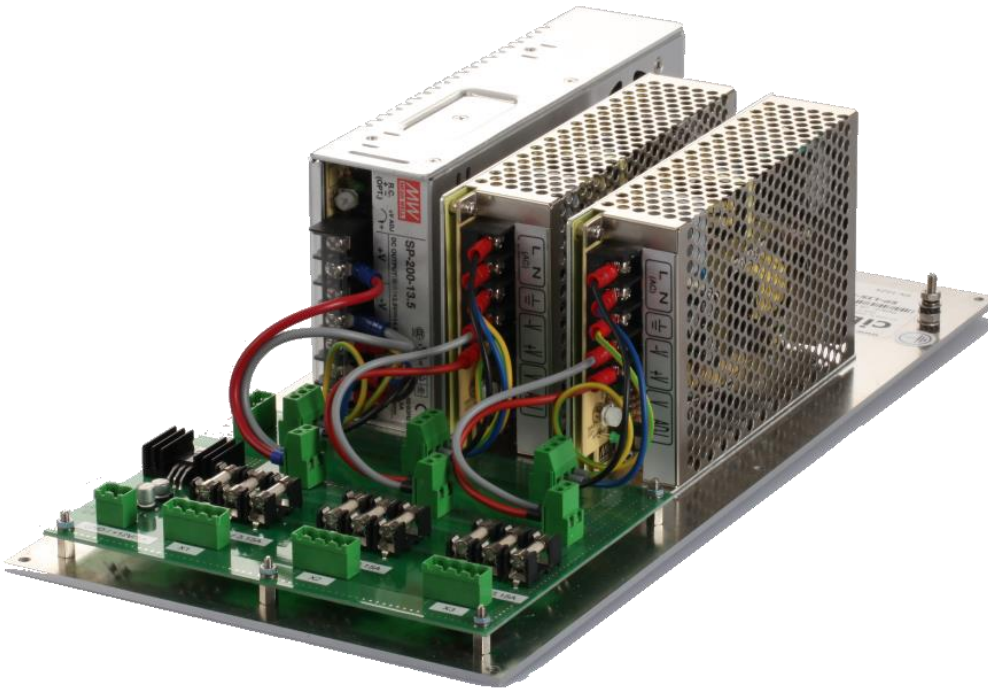
Item Description

ART / ID

VIS-MANIFOLD-BRD-RIGHT

ART002898/13655P28

POWER SUPPLY



Description

Powersupply for the LIS System T, which provides the Master as well as the Slave.

Product Specifications

Input Voltage:	100 – 240VAC 50/60Hz
Operating Temperatur:	-10 up to +60°C
Humidity:	90% non condensing
Measures:(HxWxD)	32 x 12 x 9cm

Item Description

ART / ID

VIS-POWER-SUPPLY

ART005728/13655P17

VIS-POWER-SUPPLY

ART002885/13655P25

Contact us

VISTAscan GmbH

VISTAscan GmbH
Posthof 4
86609 Donauwörth

Fon: +49 906 9999 8239

Email: sales@vista-scan.com

Email / Internet

Sales: sales@vista-scan.com

Place an order: order@vista-scan.com

Website: www.vista-scan.com



marketing@vista-scan.com